

2021-2022 BROCHURE

TUFFKING



SAFETY FOOTWEAR

G|N

Giffard Newton & Sons Limited
Est. 1854

COMMITMENT TO QUALITY

Giffard Newton & Sons Limited prides itself on being the oldest British safety footwear manufacturer. British owned and operated for 167 years, we continue to innovate using lighter weight components and recycled materials. All of our products are manufactured in accordance with **ISO 9001 Quality Management System** and **ISO 14001 Environmental Management Systems**. We are proud to boast among the lowest return rates in the industry for nearly a decade.

LESS THAN 1% OVERALL
RETURNS OVER 7 YEARS

1%

MORE THAN 33% REDUCTION IN
OVERALL CARBON FOOTPRINT
OVER 2 YEARS

33%



ALL PRODUCTS MANUFACTURED IN ISO APPROVED FACILITIES



P.01 - GENERAL SAFETY

ENTRY LEVEL CHUKKA BOOTS

P.02 - INDUSTRIAL & TRADES

WELLINGTONS & RIGGERS

P.06 - CONSTRUCTION

DURABLE SAFETY HIKERS

P.09 - OIL & GAS & UTILITIES

SIDE ZIP & WATERPROOF

P.13 - FACILITIES MANAGEMENT

METAL FREE & SCANNER SAFE

P.15 - LOGISTICS & WAREHOUSING

LIGHTWEIGHT SAFETY TRAINERS

P.19 - AIR CUSHION OUTSOLE

ANTI-FATIGUE CUSHIONED

P.23 - UNIFORM & CONTRACT

EXECUTIVE SAFETY RANGE

P.25 - AGRICULTURAL

NITRILE OUTSOLE/HEAVY INDUSTRY

P.29 - MEDICAL & CATERING

MACHINE WASHABLE & VEGAN



TUFFKING

GENERAL SAFETY

DELTA

PRODUCT CODE: 9038



EN ISO 20345:2011

S3 SRC

| SIZES AVAILABLE 3 - 14 |

- BLACK BUFFALO LEATHER
- WATER RESISTANT
- PENETRATION RESISTANT
- PROTECTIVE TOE CAP
- 4 D-RING LACING
- STAINLESS STEEL TOE CAP
- STAINLESS STEEL MIDSOLE
- SLIP RESISTANT SRC TESTED
- PU/PU OUTSOLE



DELTA +

PRODUCT CODE: 9040



EN ISO 20345:2011

S3 SRC

| SIZES AVAILABLE 3 - 14 |

- BLACK BUFFALO LEATHER
- WATER RESISTANT
- PENETRATION RESISTANT
- PROTECTIVE TOE CAP
- FRONT SCUFF GUARD
- STAINLESS STEEL TOE CAP
- STAINLESS STEEL MIDSOLE
- SLIP RESISTANT SRC TESTED
- PU/PU OUTSOLE



AUSTIN

PRODUCT CODE: 9001



EN ISO 20345:2011

S3 SRC

| SIZES AVAILABLE 3 - 13 |

- BLACK BUFFALO LEATHER
- WATER RESISTANT
- PENETRATION RESISTANT
- PROTECTIVE TOE CAP
- 3 EYELET LACING
- STAINLESS STEEL TOE CAP
- STAINLESS STEEL MIDSOLE
- SLIP RESISTANT SRC TESTED
- PU/PU OUTSOLE



BLAZER

PRODUCT CODE: 4213



EN ISO 20345:2011

S5 SRC

| SIZES AVAILABLE 4 - 13 |

- PVC & NITRILE UPPER
- ANTIBACTERIAL POLYESTER LINING
- 200 JOULE TOE CAP
- REINFORCED STEEL MIDSOLE
- RESISTANT TO ACIDS & CHEMICALS
- SLIP RESISTANT OUTSOLE
- WATERPROOF
- ANTI-STATIC SOLE
- DEEP CLEATED GRIP DESIGN



GLACIER

PRODUCT CODE: 9050



EN ISO 20345:2011

S1P SRA

| SIZES AVAILABLE 3 - 13 |

- TAN APOLLO LEATHER
- WATER RESISTANT
- FULLY FUR LINED
- PROTECTIVE TOE CAP
- PULL ON SIDE LOOPS
- STAINLESS STEEL TOE CAP & MIDSOLE
- DUAL DENSITY PU OUTSOLE
- SLIP RESISTANT SRA TESTED
- OIL, ACID & ALKALI RESISTANT



GLACIER+

PRODUCT CODE: 9049



EN ISO 20345:2011

S1P SRC

| SIZES AVAILABLE 3 - 13 |

- TAN APOLLO LEATHER + SCUFF GUARD
- WATER RESISTANT
- FULLY FUR LINED
- PROTECTIVE TOE CAP
- PULL ON SIDE LOOPS
- STAINLESS STEEL TOE CAP & MIDSOLE
- DUAL DENSITY PU OUTSOLE
- SLIP RESISTANT SRC TESTED
- OIL, ACID & ALKALI RESISTANT



AXLE

PRODUCT CODE: 9060



EN ISO 20345:2011

S3 SRC

| SIZES AVAILABLE 3 - 13 |

- BLACK BUFFALO LEATHER
- AVAILABLE WITH FUR LINING OR MICROFIBRE
- 200 JOULE TOE CAP
- REINFORCED STEEL MIDSOLE
- RESISTANT TO ACIDS & CHEMICALS
- SLIP RESISTANT OUTSOLE
- WATER RESISTANT
- TPU REAR KICK GUARD
- PULL ON SIDE LOOPS



BROOK

PRODUCT CODE: 9552



EN ISO 20345:2011

S1P SRA

| SIZES AVAILABLE 3 - 13 |

- BROWN SMOOTH LEATHER
- TPU REAR KICK GUARD
- BREATHABLE CAMBRELLE LINING
- PULL ON LOOPS
- ELASTICATED SIDE GUSSET
- STAINLESS STEEL TOE CAP & MIDSOLE
- ANTI-STATIC OUTSOLE
- SLIP RESISTANT SRA TESTED
- OIL, ACID & ALKALI RESISTANT



BROOK

PRODUCT CODE: 9551



EN ISO 20345:2011

S1P SRA

| SIZES AVAILABLE 3 - 13 |

- BLACK SMOOTH LEATHER
- TPU REAR KICK GUARD
- BREATHABLE CAMBRELLE LINING
- PULL ON LOOPS
- ELASTICATED SIDE GUSSET
- STAINLESS STEEL TOE CAP & MIDSOLE
- ANTI-STATIC OUTSOLE
- SLIP RESISTANT SRA TESTED
- OIL, ACID & ALKALI RESISTANT



INDUSTRIAL & TRADES

REGAL

PRODUCT CODE: 9550



EN ISO 20345:2011

S3 SRC

| SIZES AVAILABLE 3 - 13 |

- BLACK SMOOTH ACTION LEATHER
- PADDED COLLAR & TONGUE
- 200 JOULE TOE CAP
- STAINLESS STEEL MIDSOLE
- RESISTANT TO ACIDS & CHEMICALS
- SLIP RESISTANT OUTSOLE
- WATER RESISTANT
- 90 DEGREE LADDER GRIP HEEL
- ANTI-STATIC



HAYES

PRODUCT CODE: 2010



EN ISO 20345:2011

S1P SRA

| SIZES AVAILABLE 4 - 13 |

- TAN ACTION NUBUCK LEATHER
- THICK COLLAR PADDED COMFORT
- BREATHABLE CAMBRELLE LINING
- EVA FOOTBED
- IMPACT ABSORBING HEEL
- STAINLESS STEEL TOE CAP & MIDSOLE
- ANTI-STATIC
- SLIP RESISTANT SRA TESTED
- OIL, ACID & ALKALI RESISTANT



DAYTON

PRODUCT CODE: 2407



EN ISO 20345:2011

S3 SRC

| SIZES AVAILABLE 14 - 16 |

- BLACK SMOOTH LEATHER
- DEEP PADDED COLLAR PADDING
- BREATHABLE CAMBRELLE LINING
- IMPACT ABSORBING HEEL
- LARGE SIZES 14 to 16
- STAINLESS STEEL TOE CAP & MIDSOLE
- ANTI-STATIC
- SLIP RESISTANT SRC TESTED
- OIL, ACID & SOLVENT RESISTANT



INDUSTRIAL & TRADES

EDGE

PRODUCT CODE: 9159



EN ISO 20345:2011

S3 SRC

| SIZES AVAILABLE 3 - 13 |

- BLACK SMOOTH ACTION LEATHER
- PADDED COLLAR & TONGUE
- WATER RESISTANT
- STAINLESS STEEL TOE CAP & MIDSOLE
- RESISTANT TO ACIDS & CHEMICALS
- SLIP RESISTANT OUTSOLE
- WATER RESISTANT
- 90 DEGREE LADDER GRIP HEEL
- ANTI-STATIC



FORGE+

PRODUCT CODE: 9107



EN ISO 20345:2011

S3 SRC

| SIZES AVAILABLE 4 - 13 |

- BLACK FULL GRAIN LEATHER
- 1200D BREATHABLE OXFORD SIDES
- BREATHABLE CAMBRELLE LINING
- GENUINE YKK SIDE ZIP
- DUAL DENSITY PU/TPU OUTSOLE
- STAINLESS STEEL TOE CAP & MIDSOLE
- ANTI-STATIC
- SLIP RESISTANT SRC TESTED
- OIL, ACID & SOLVENT RESISTANT



ORSON+

PRODUCT CODE: 9560



EN ISO 20345:2011

S3 SRC

| SIZES AVAILABLE 4 - 13 |

- BLACK SMOOTH GRAIN LEATHER
- ERGONOMIC PADDED COLLAR
- BREATHABLE CAMBRELLE LINING
- TPU FRONT SCUFF GUARD
- IMPACT ABSORBING HEEL
- STAINLESS STEEL TOE CAP & MIDSOLE
- ANTI-STATIC
- EXAGGERATED 90 DEGREE LADDER HEEL
- OIL, ACID & ALKALI RESISTANT



GOODYEAR WELTED

ADLER BLK

PRODUCT CODE: 2004



EN ISO 20345:2011

SBP SRA HRO

| SIZES AVAILABLE 6 - 13 |

- GOODYEAR WELTED OUTSOLE
- BLACK SMOOTH LEATHER
- PADDED COLLAR & TONGUE
- SIDE VENTILATED ANKLE GUARD
- STAINLESS STEEL TOE CAP & MIDSOLE
- RESISTANT TO ACIDS & CHEMICALS
- SLIP RESISTANT OUTSOLE
- LADDER GRIP
- ANTI-STATIC



ADLER TAN

PRODUCT CODE: 2007



EN ISO 20345:2011

SBP SRA HRO

| SIZES AVAILABLE 6 - 13 |

- GOODYEAR WELTED OUTSOLE
- GENUINE NUBUCK LEATHER
- PADDED COLLAR & TONGUE
- SIDE VENTILATED ANKLE GUARD
- STAINLESS STEEL TOE CAP & MIDSOLE
- RESISTANT TO ACIDS & CHEMICALS
- SLIP RESISTANT OUTSOLE
- LADDER GRIP
- ANTI-STATIC



ADLER BRN

PRODUCT CODE: 2006



EN ISO 20345:2011

SBP SRA HRO

| SIZES AVAILABLE 6 - 13 |

- GOODYEAR WELTED OUTSOLE
- SMOOTH BROWN LEATHER
- PADDED COLLAR & TONGUE
- SIDE ANKLE VENTILATED GUARD
- STAINLESS STEEL TOE CAP & MIDSOLE
- RESISTANT TO ACIDS & CHEMICALS
- SLIP RESISTANT OUTSOLE
- LADDER GRIP
- ANTI-STATIC



CONSTRUCTION

SYNAPSE

PRODUCT CODE: 2112



EN ISO 20345:2011

S3 SRC

| SIZES AVAILABLE 5 - 12 |

- BLACK ACTION NUBUCK LEATHER
- DEEP PADDED ECONOMIC COLLAR
- 200 JOULE TOE CAP
- REINFORCED STEEL MIDSOLE
- RESISTANT TO ACIDS & CHEMICALS
- SLIP RESISTANT OUTSOLE
- DUAL DENSITY PU OUTSOLE
- ANTI-STATIC SOLE
- FRONT SCUFF GUARD



FURY

PRODUCT CODE: 2015



EN ISO 20345:2011

S3 SRC

| SIZES AVAILABLE 3 - 13 |

- GENUINE TAN NUBUCK LEATHER
- WATER RESISTANT
- REAR RUBBER KICK GUARD
- VENTILATED ANKLE PADDING
- PU ANTI-FATIGUE FOOTBED
- STAINLESS STEEL TOE CAP & MIDSOLE
- DUAL DENSITY PU OUTSOLE
- SLIP RESISTANT SRC TESTED
- OIL, ACID & ALKALI RESISTANT



FORGE

PRODUCT CODE: 9108



EN ISO 20345:2011

S3 SRC

| SIZES AVAILABLE 4 - 13 |

- BLACK FULL GRAIN LEATHER
- 1200D BREATHABLE OXFORD SIDE
- CAMBRELLE LINED
- ANTI-STATIC
- GENUINE YKK SIDE ZIP
- STAINLESS STEEL TOE CAP & MIDSOLE
- DUAL DENSITY PU/TPU OUTSOLE
- SLIP RESISTANT SRC TESTED
- OIL, ACID & ALKALI RESISTANT



CONSTRUCTION

GRIND

PRODUCT CODE: 8040



EN ISO 20345:2011

S3 SRC

| SIZES AVAILABLE 5 - 12 |

- BLACK NUBUCK LEATHER
- WATER RESISTANT
- 200 JOULE TOE CAP
- REINFORCED STEEL MIDSOLE
- RESISTANT TO ACIDS & CHEMICALS
- SLIP RESISTANT OUTSOLE
- PADDED COMFORT COLLAR
- DUAL DENSITY PU OUTSOLE
- EVA/FOAM FOOTBED



CRAZE

PRODUCT CODE: 8040

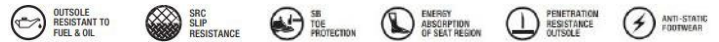


EN ISO 20345:2011

S3 SRC

| SIZES AVAILABLE 5- 12 |

- GENUINE TAN NUBUCK LEATHER
- WATER RESISTANT
- 200 JOULE TOE CAP
- REINFORCED STEEL MIDSOLE
- RESISTANT TO ACIDS & CHEMICALS
- SLIP RESISTANT OUTSOLE
- PADDED COMFORT COLLAR
- DUAL DENSITY PU OUTSOLE
- EVA/FOAM FOOTBED



BREE

PRODUCT CODE: 8066

COMING SOON

TUFFELLE

MADE FOR HER



EN ISO 20345:2011

S3 SRC

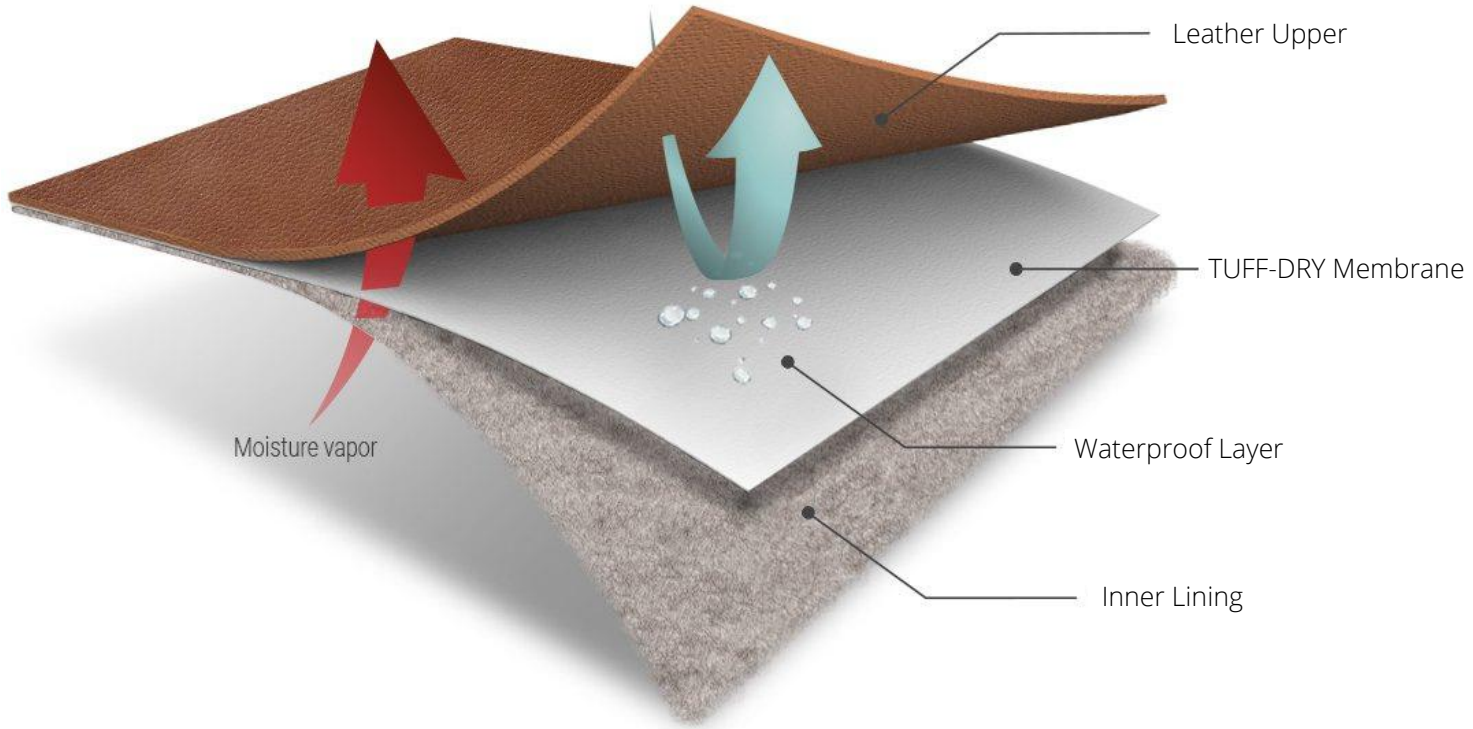
| SIZES AVAILABLE 3 - 8 |

- BLACK NUBUCK LEATHER
- WATER RESISTANT
- 200 JOULE TOE CAP
- REINFORCED STEEL MIDSOLE
- RESISTANT TO ACIDS & CHEMICALS
- SLIP RESISTANT OUTSOLE
- LADIES FITTING
- DUAL DENSITY PU OUTSOLE
- EVA/FOAM FOOTBED



TUFF-DRY

PROTECTIVE WATERPROOF TEXTILES



OIL/GAS & UTILITIES

REBEL

PRODUCT CODE: 2115



EN ISO 20345:2011

S3 SRC HRO

| SIZES AVAILABLE 5 - 13 |

- BLACK GENUINE LEATHER
- WATER RESISTANT
- 200 JOULE TOE CAP
- REINFORCED STEEL MIDSOLE
- RESISTANT TO ACIDS & CHEMICALS
- SLIP RESISTANT OUTSOLE
- PADDED COMFORT COLLAR
- HEAT RESISTANT RUBBER SOLE 300°C
- EVA/FOAM FOOTBED



HAVOC

PRODUCT CODE: 7145

TUFF-DRY

PROTECTIVE WATERPROOF TEXTILES



EN ISO 20345:2011

S3 WR HI CI SRC HRO

| SIZES AVAILABLE 5- 15 |

- GENUINE FLAME RETARDANT LEATHER
- WATERPROOF MEMBRANE
- FIBREGLASS TOE CAP
- KEVLAR MIDSOLE PROTECTION
- RESISTANT TO OILS, ACIDS & CHEMICALS
- GENUINE YKK METAL SPIRAL ZIP
- REAR TPU KICK GUARD
- HEAT RESISTANT RUBBER SOLE 300°C
- PU ANTI-FATIGUE FOOTBED



TITUS

PRODUCT CODE: 9113

TUFF-DRY

PROTECTIVE WATERPROOF TEXTILES



EN ISO 20345:2011

S3 WR CI SRC HRO

| SIZES AVAILABLE 5 - 13 |

- 2.2mm CRAZY HORSE LEATHER
- WATERPROOF MEMBRANE
- FIBREGLASS TOE CAP
- KEVLAR MIDSOLE PROTECTION
- RESISTANT TO OILS, ACIDS & CHEMICALS
- DUAL THICKNESS YKK SPIRAL ZIP
- COLD INSULATED TO - 30°C
- HEAT RESISTANT RUBBER SOLE 300°C
- EVA/FOAM FOOTBED



WATERPROOF

ALPINE BLK

TUFF-DRY

PROTECTIVE WATERPROOF TEXTILES

PRODUCT CODE: 7203

EN ISO 20345:2011

S3 SRC WR



| SIZES AVAILABLE 4 - 13 |

- BLACK NUBUCK LEATHER
- WATERPROOF MEMBRANE
- FIBREGLASS TOE CAP
- COMPOSITE MIDSOLE
- 700G - LIGHTWEIGHT CONSTRUCTION
- OIL, ACID & CHEMICAL RESISTANT
- EXTRA INTERNAL PADDED COMFORT
- COMPLETELY METAL FREE
- DUAL LAYERED EVA FOOTBED



ALPINE BRN

TUFF-DRY

PROTECTIVE WATERPROOF TEXTILES

PRODUCT CODE: 7204

EN ISO 20345:2011

S3 SRC WR



| SIZES AVAILABLE 4 - 13 |

- BROWN NUBUCK LEATHER
- WATERPROOF MEMBRANE
- FIBREGLASS TOE CAP
- COMPOSITE MIDSOLE
- 700G - LIGHTWEIGHT CONSTRUCTION
- OIL, ACID & CHEMICAL RESISTANT
- EXTRA INTERNAL PADDED COMFORT
- COMPLETELY METAL FREE
- DUAL LAYERED EVA FOOTBED



VEGA+

TUFF-DRY

PROTECTIVE WATERPROOF TEXTILES

PRODUCT CODE: 7225

EN ISO 20345:2011

S3 SRC WR



| SIZES AVAILABLE 3 - 13 |

- 1.8mm THICK VEGAN LEATHER
- WATERPROOF MEMBRANE
- COMPLETELY METAL FREE
- FIBREGLASS TOE CAP
- KEVLAR MIDSOLE
- 1200D WATER RESISTANT OXFORD FABRIC
- PU ANTI-FATIGUE FOOTBED
- RUBBER FRONT SCUFFGUARD
- DUAL DENSITY SLIP RESISTANT OUTSOLE



WATERPROOF

VERANO

TUFF-DRY

PROTECTIVE WATERPROOF TEXTILES

PRODUCT CODE: 7003



EN ISO 20345:2011

S3 WR HI CI SRC HRO

| SIZES AVAILABLE 3 - 13 |

- FULL GRAIN WATER RESISTANT LEATHER
- WATERPROOF MEMBRANE
- FIBREGLASS TOE CAP
- COMPOSITE MIDSOLE
- TPU SIDE ANKLE SUPPORT
- OIL, ACID & CHEMICAL RESISTANT
- HEAT RESISTANT RUBBER SOLE 300°C
- HOT AND COLD INSULATED
- DUAL LAYERED EVA FOOTBED



VIKING

TUFF-DRY

PROTECTIVE WATERPROOF TEXTILES

PRODUCT CODE: 2125



EN ISO 20345:2011

S3 WR SRC HRO

| SIZES AVAILABLE 5 - 12 |

- CRAZY HORSE LEATHER (WATERPROOF)
- WATERPROOF MEMBRANE
- THINSULATE INNER LINING
- STAINLESS STEEL TOE & MIDSOLE
- LIGHTWEIGHT CONSTRUCTION
- OIL, ACID & CHEMICAL RESISTANT
- EVA/RUBBER OUTSOLE
- DEEP PROTECTIVE EXTERNAL PADDING
- PU ANTI-FATIGUE FOOTBED



VERTEX

TUFF-DRY

PROTECTIVE WATERPROOF TEXTILES

PRODUCT CODE: 7011



EN ISO 20345:2011

S3 WR HI CI SRC HRO

| SIZES AVAILABLE 3 - 14 |

- 2.0mm FULL GRAIN LEATHER
- WATERPROOF MEMBRANE
- COLD INSULATED TO -20°C
- FIBREGLASS TOE CAP
- KEVLAR MIDSOLE
- FLAME RETARDANT LEATHER
- PU ANTI-FATIGUE FOOTBED
- FRONT SCUFF GUARD
- HEAT RESISTANT RUBBER SOLE 300°C



FACILITIES MANAGEMENT

COLE

PRODUCT CODE: 9153



EN ISO 20345:2011

S3 SRC

| SIZES AVAILABLE 3 - 13 |

- SMOOTH BLACK LEATHER
- FIBREGLASS TOE CAP
- BREATHABLE CAMBRELLE LINING
- KEVLAR MIDSOLE
- DUAL DENSITY PU OUTSOLE
- SLIP RESISTANT SRC
- XTRA-LIGHT ANTI-FATIGUE FOOTBED
- METAL FREE EYELTS
- LIGHTWEIGHT CONSTRUCTION



APEX

PRODUCT CODE: 7109



EN ISO 20345:2011

S3 WR HI CI SRC HRO

| SIZES AVAILABLE 3 - 15 |

- 6" SIDE-ZIP FULL LEATHER
- WATER RESISTANT UPPER
- COMPLETELY METAL FREE
- FIBREGLASS TOECAP & KEVLAR MIDSOLE
- GENUINE YKK SIDE ZIP (NON-METALLIC)
- FLAME RETARDANT LEATHER
- XTRA-LIGHT ANTI-FATIGUE FOOTBED
- COLD INSULATED INNER LINING (-20° C)
- HEAT RESISTANT RUBBER SOLE 300°C



VEGA

PRODUCT CODE: 7224

TUFF-DRY

PROTECTIVE WATERPROOF TEXTILES



EN ISO 20345:2011

S3 WR SRC

| SIZES AVAILABLE 3 - 13 |

- 1.8mm THICK VEGAN LEATHER
- WATERPROOF MEMBRANE
- METAL FREE HOOKS
- FIBREGLASS TOECAP
- KEVLAR MIDSOLE
- 1200D WATER RESISTANT OXFORD FABRIC
- PU ANTI-FATIGUE FOOTBED
- BREATHABLE INNER LINING
- DUAL DENSITY SLIP RESISTANT OUTSOLE



TUFFKING

KNOX

TUFF-DRY

PROTECTIVE WATERPROOF TEXTILES

PRODUCT CODE: 7125

EN ISO 20345:2011 | S3 WR HI CI SRC HRO



| SIZES AVAILABLE 3 - 15 |

- 8" SIDE ZIP SAFETY BOOT
- GENUINE SMOOTH GRAIN LEATHER
- WATERPROOF MEMBRANE
- EVA/RUBBER OUTSOLE
- REAR AGILITY FLEX COLLAR
- FLAME REDTARDENT
- COLD INSULATED TO -20° C
- 100% METAL FREE
- FIBREGLASS TOE CAP
- KEVLAR MIDSOLE PENETRATION PROTECTION
- HEAT RESISTANT TO 300° C
- SLIP RESISTANT SRC TESTED
- XTRA-LITE ANTI-FATIGUE FOOTBED



LYNX

TUFF-DRY

PROTECTIVE WATERPROOF TEXTILES

PRODUCT CODE: 7126

EN ISO 20345:2011 | S3 WR HI CI SRC HRO



| SIZES AVAILABLE 3 - 15 |

- 6" SIDE ZIP SAFETY BOOT
- GENUINE SMOOTH GRAIN LEATHER
- WATERPROOF MEMBRANE
- EVA/RUBBER OUTSOLE
- REAR AGILITY FLEX COLLAR
- FLAME REDTARDENT
- COLD INSULATED TO -20° C
- 100% METAL FREE
- FIBREGLASS TOE CAP
- KEVLAR MIDSOLE PENETRATION PROTECTION
- HEAT RESISTANT TO 300° C
- SLIP RESISTANT SRC TESTED
- XTRA-LITE ANTI-FATIGUE FOOTBED



TUFFKING

SAFETY TRAINERS



XTRA-LITE

PERFORMANCE • AGILITY • COMFORT



LOGISTICS & WAREHOUSING

NITRO

PRODUCT CODE: 8032



EN ISO 20345:2011

SB SRA

| SIZES AVAILABLE 6 - 12 |

- BLACK SMOOTH LEATHER
- LIGHTWEIGHT DESIGN
- 200 JOULES TOE CAP
- BREATHABLE CAMBRELLE LINING
- RESISTANT TO OILS, ACIDS & SOLVENTS
- EVA/RUBBER OUTSOLE
- SLIP RESISTANT TESTED OUTSOLE
- FLEXIBLE TRAINER OUTSOLE
- BREATHABLE EVA FOOTBED



ONYX BLK

PRODUCT CODE: 9066



EN ISO 20345:2011

S1P SRC

| SIZES AVAILABLE 3 - 13 |

- SMOOTH LEATHER UPPER
- BREATHABLE MESH SIDING
- SUEDE FRONT & REAR SCUFF GUARD
- STAINLESS STEEL TOE CAP
- STAINLESS STEEL MIDSOLE
- RESISTANT TO OILS, ACIDS & SOLVENS
- LIGHTWEIGHT CONSTRUCTION
- DUAL DENSITY PU OUTSOLE
- SLIP RESISTANT SRC TESTED



ONYX GRY

PRODUCT CODE: 9067



EN ISO 20345:2011

S1P SRC

| SIZES AVAILABLE 3 - 13 |

- GENUINE GREY SUEDE LEATHER
- BREATHABLE MESH SIDING
- SUEDE FRONT & REAR SCUFF GUARD
- STAINLESS STEEL TOE CAP
- STAINLESS STEEL MIDSOLE
- RESISTANT TO OILS, ACIDS & SOLVENS
- LIGHTWEIGHT CONSTRUCTION
- DUAL DENSITY PU/TPU OUTSOLE
- SLIP RESISTANT SRC TESTED



LOGISTICS & WAREHOUSING

NOVA

PRODUCT CODE: 7765



EN ISO 20345:2011

S1P SRC ESD

| SIZES AVAILABLE 3 - 13 |

- SUSTAINABLE KPU UPPER
- BREATHABLE ABSORBANT LINING
- TPU SCUFF GUARD
- FIBREGLASS TOE CAP
- KEVLAR MIDSOLE PROTECTION
- 500g LIGHTWEIGHT CONSTRUCTION
- EVA/RUBBER OUTSOLE
- EXTRA COMFORT EVA FOOTBED
- SLIP RESISTANT SRC TESTED



PACE

PRODUCT CODE: 7760



EN ISO 20345:2011

S1P SRC

| SIZES AVAILABLE 3 - 13 |

- SMOOTH GENUINE LEATHER UPPER
- REAR TPU KICKGUARD
- RAISED SIDE PROTECTIVE PADDING
- STAINLESS STEEL TOE CAP
- STAINLESS STEEL MIDSOLE
- LIGHTWEIGHT & LOW PROFILE
- UNISEX FITTING
- EVA/RUBBER OUTSOLE
- SLIP RESISTANT SRC TESTED



MAYA

PRODUCT CODE: 7766

TUFFELLE

MADE FOR HER



EN ISO 20345:2011

S1P SRC

| SIZES AVAILABLE 3 - 8 |

- BLACK SMOOTH GENUINE LEATHER
- LADIES FITTING
- 200 JOULES TOE CAP
- PROTECTIVE MIDSOLE
- RESISTANT TO OILS, ACIDS & SOLVENTS
- EVA/RUBBER OUTSOLE
- SLIP RESISTANT TESTED OUTSOLE
- FLEXIBLE TRAINER OUTSOLE
- BREATHABLE EVA FOOTBED



LOGISTICS & WAREHOUSING

SWIFT

PRODUCT CODE: 9081



EN ISO 20345:2011

S1P SRC

| SIZES AVAILABLE 3 - 13 |

- BREATHABLE FLYKNIT UPPER
- CAMBRELLE LINING
- FIBREGLASS TOE CAP
- KEVLAR MIDSOLE PROTECTION
- LIGHTWEIGHT & METAL FREE
- DUAL DENSITY PU OUTSOLE
- RESISTANT TO OILS, ACIDS & CHEMICALS
- SLIP RESISTANT SRC TESTED
- ANTI-FATIGUE PU FOOTBED



FLYTE

PRODUCT CODE: 9080



EN ISO 20345:2011

S1P SRC

| SIZES AVAILABLE 3 - 13 |

- SUSTAINABLE KPU UPPER
- CAMBRELLE LINING
- FIBREGLASS TOE CAP
- KEVLAR MIDSOLE PROTECTION
- LIGHTWEIGHT & METAL FREE
- DUAL DENSITY PU OUTSOLE
- RESISTANT TO OILS, ACIDS & CHEMICALS
- SLIP RESISTANT SRC TESTED
- ANTI-FATIGUE PU FOOTBED



FLOW

COMING SOON

PRODUCT CODE: 9085



EN ISO 20345:2011

S1P SRC

| SIZES AVAILABLE 3 - 13 |

- GENUINE SUEDE LEATHER
- FIBREGLASS TOE CAP
- KEVLAR MIDSOLE
- BREATHABLE DIAMOND OXFORD TEXTILE
- RESISTANT TO OILS, ACIDS & SOLVENTS
- ANTI-FATIGUE FOAM INFUSED OUTSOLE
- SLIP RESISTANT SRC
- LIGHTWEIGHT & METAL FREE
- MOISTURE ABORBNING INNER LINING



AIR CUSHION SAFETY



SLIP RESISTANT

ANTI-BACTERIAL

ENERGY ABSORBANT



DEEP CLEATED GRIP

OIL, ACID & SOLVENT RESISTANT

ANTI-FATIGUE



AIR CUSHION SAFETY

COOPER

PRODUCT CODE: 5260

| SIZES AVAILABLE 3 - 13 |



EN ISO 20345: 2011 | SB E SRA

- PREMIUM INDUSTRIAL GRADE LEATHER
- NITRILE PVC OUTSOLE
- 2.0mm THICK CUT LEATHER
- ELASTICATED SIDE GUSSET
- CAMBRELLE TEXTILE INNER LINING
- ANTI-ODOUR & ANTI-BACTERIAL INSOLE
- PVC AIR CUSHION
- ANTI-FATIGUE AIR COMPRESSION
- TRIPLE CUSHION PU FOOTBED
- OIL, ACID & SOLVENT RESISTANT
- ENERGY ABSORBENT HEEL
- SLIP RESISTANT SRA TESTED
- FIBREGLASS TOE CAP



CROSBY

PRODUCT CODE: 5250

| SIZES AVAILABLE 3 - 13 |

EN ISO 20345: 2011 | SB E SRA



- PREMIUM INDUSTRIAL GRADE LEATHER
- NITRILE PVC OUTSOLE
- 2.0mm THICK CUT LEATHER
- HIGH LEG BOOT CUT DESIGN
- PU TRIPLE CUSHION FOOTBED
- HERRINGBONE INNER LINING
- ANTI-ODOUR INSOLE
- PVC AIR CUSHION
- ANTI-FATIGUE AIR COMPRESSION
- ANTI-BACTERIAL
- OIL, ACID & SOLVENT RESISTANT
- ENERGY ABSORBENT HEEL
- SLIP RESISTANT SRA TESTED
- FIBREGLASS TOE CAP



AIR CUSHION SAFETY

HOLT

PRODUCT CODE: 5225

| SIZES AVAILABLE 3 - 13 |

EN ISO 20345: 2011 | SB E SRA



- PREMIUM INDUSTRIAL GRADE LEATHER
- NITRILE PVC OUTSOLE
- 2.0mm THICK CUT LEATHER
- PU TRIPLE CUSHIONED FOOTBED
- CAMBRELLE TEXTILE INNER LINING
- ANTI-ODOUR INSOLE
- PVC AIR CUSHION
- ANTI-FATIGUE AIR COMPRESSION
- ANTI-BACTERIAL
- OIL, ACID & SOLVENT RESISTANT
- ENERGY ABSORBENT HEEL
- SLIP RESISTANT SRA TESTED
- FIBREGLASS TOE CAP



ALTON

PRODUCT CODE: 5255

| SIZES AVAILABLE 3 - 13 |

EN ISO 20345: 2011 | SB E SRA



- PREMIUM INDUSTRIAL GRADE LEATHER
- NITRILE PVC OUTSOLE
- 2.0mm THICK CUT LEATHER
- DEEP PADDED COLLAR & TONGUE
- PU TRIPLE CUSHIONED
- HERRINGBONE INNER LINING
- ANTI-ODOUR INSOLE
- PVC AIR CUSHION
- ANTI-FATIGUE AIR COMPRESSION
- ANTI-BACTERIAL
- OIL, ACID & SOLVENT RESISTANT
- ENERGY ABSORBENT HEEL
- SLIP RESISTANT SRA TESTED
- FIBREGLASS TOE CAP



AIR CUSHION SAFETY

EARL

PRODUCT CODE: 5000



| SIZES AVAILABLE 3 - 13 |

EN ISO 20345: 2011 | SB E SRA

- GENUINE BLACK LEATHER
- BREATHABLE MICROFIBRE LINING
- ANTI-ODOUR INSOLE
- PVC AIR CUSHION SOLE
- ANTI-FATIGUE AIR COMPRESSION
- THICK PADDED ANKLE COLLAR
- ANTI-BACTERIAL
- OIL, ACID & SOLVENT RESISTANT
- ENERGY ABSORBENT HEEL
- SLIP RESISTANT SRA TESTED
- STAINLESS STEEL TOE CAP

YATE

PRODUCT CODE: 5222

| SIZES AVAILABLE 4 - 15 | WOMENS 3-8 | WIDE FIT & HALF SIZES AVAILABLE

EN ISO 20345: 2011 | SB E SRA

- DEEP CLEATED SOLE
- GENUINE COWHIDE PREMIUM LEATHER
- LEATHER INNER LINING
- ANTI-ODOUR LEATHER INSOLE
- ANTI-FATIGUE AIR COMPRESSION
- ANTI-BACTERIAL
- OIL, ACID & SOLVENT RESISTANT
- ENERGY ABSORBENT HEEL
- SLIP RESISTANT SRA TESTED
- STAINLESS STEEL TOE CAP



ESQUIRE

PRODUCT CODE: 5015

| SIZES AVAILABLE 3 - 13 | WIDE FIT & HALF SIZES AVAILABLE

EN ISO 20345: 2011 | SB E SRA

- GENUINE HIGH SHINE FULL GRAIN LEATHER
- BREATHABLE MICROFIBRE LINING
- ANTI-ODOUR INSOLE
- PVC AIR CUSHION SOLE
- ANTI-FATIGUE AIR COMPRESSION
- THICK PADDED ANKLE COLLAR
- ANTI-BACTERIAL
- OIL, ACID & SOLVENT RESISTANT
- ENERGY ABSORBENT HEEL
- SLIP RESISTANT SRA TESTED
- STAINLESS STEEL TOE CAP



PROFESSIONAL SAFETY

BROGUE

PRODUCT CODE: 9076



| SIZES AVAILABLE 3 - 13 |

EN ISO 20345: 2011 | S3 SRC

- FULL GRAIN LEATHER
- BREATHABLE CAMBRELLE LINING
- STAINLESS STEEL MIDSOLE PROTECTION
- PU/RUBBER OUTSOLE
- ANTI-FATIGUE PU FOOTBED
- THICK PADDED ANKLE COLLAR
- ANTI-BACTERIAL
- OIL, ACID & SOLVENT RESISTANT
- ENERGY ABSORBENT HEEL
- SLIP RESISTANT SRC TESTED
- STAINLESS STEEL TOE CAP



ELLIS

PRODUCT CODE: 9078

EN ISO 20345: 2011 | S3 SRC

- FULL GRAIN LEATHER
- BREATHABLE CAMBRELLE LINING
- COMPOSITE TOE CAP
- COMPOSITE MIDSOLE PROTECTION
- PU/RUBBER OUTSOLE
- ANTI-FATIGUE PU FOOTBED
- ANTI-BACTERIAL
- OIL, ACID & SOLVENT RESISTANT
- ENERGY ABSORBENT HEEL
- SLIP RESISTANT SRC TESTED



| SIZES AVAILABLE 3 - 13 |



OXFORD

PRODUCT CODE: 9072



| SIZES AVAILABLE 3 - 13 |

EN ISO 20345: 2011 | S3 SRC

- FULL GRAIN LEATHER
- BREATHABLE MICROFIBRE LINING
- COMPOSITE TOE CAP
- COMPOSITE MIDSOLE PROTECTION
- PU/RUBBER OUTSOLE
- ANTI-FATIGUE PU FOOTBED
- THICK PADDED ANKLE COLLAR
- ANTI-BACTERIAL
- OIL, ACID & SOLVENT RESISTANT
- ENERGY ABSORBENT HEEL
- SLIP RESISTANT SRC TESTED



NON-SAFETY

HUGO

PRODUCT CODE: 4073

| SIZES AVAILABLE 3 - 13 | HALF SIZES AVAILABLE

AVAILABLE IN LEATHER & RUBBER OUTSOLE



- FORMAL OXFORD SHOE
- GENUINE LEATHER LINING
- REDOME 3.0mm LEATHER FOOTBED
- PREMIUM 2.0mm FULL GRAIN LEATHER
- BREATHABLE MICROFIBRE LINING
- ANTI-ODOUR INSOLE
- ANTI-BACTERIAL
- PREMIUM LEATHER OUTSOLE
- AVAILABLE WITH RUBBER SOLE

STARK

PRODUCT CODE: 4222

| SIZES AVAILABLE 3 - 13 |

EN ISO 20347: 2012 | O2 E SRA

- PREMIUM FULL GRAIN COWHIDE LEATHER
- LEATHER LINING
- ANTI-ODOUR INSOLE
- PVC AIR CUSHION SOLE
- ANTI-FATIGUE AIR COMPRESSION
- 2.0mm THICK CUT LEATHER
- ANTI-BACTERIAL
- OIL, ACID & SOLVENT RESISTANT
- ENERGY ABSORBENT HEEL
- SLIP RESISTANT SRA TESTED



DREW

PRODUCT CODE: 4000

| SIZES AVAILABLE 3 - 13 |

EN ISO 20347: 2012 | O2 E SRA



- BLACK GENUINE LEATHER
- NITRILE PVC OUTSOLE
- OIL, ACID & SOLVENT RESISTANT
- ENERGY ABSORBENT HEEL
- SLIP RESISTANT SRA TESTED
- BREATHABLE CAMBRELLE LINING
- DEEP PADDED COLLAR
- 3 EYELET LACING SYSTEM
- OCCUPATIONAL BASIC



1854

SAMSON

ENGLAND



NITREK

Precision Traction System



AGRICULTURAL SAFETY

ALBANY BLK

PRODUCT CODE: 7047



EN ISO 20345:2011 | **S3 SRC HRO**

| **SIZES AVAILABLE 6 - 12** |

- GENUINE BLACK NUBUCK LEATHER
- WATER RESISTANT
- 200 JOULE TOE CAP
- REINFORCED KEVLAR MIDSOLE
- RESISTANT TO ACIDS & CHEMICALS
- SLIP RESISTANT SRC OUTSOLE
- HEAT RESISTANT RUBBER SOLE 300°C
- NITRILE RUBBER OUTSOLE
- ANTI-FATIGUE PU FOOTBED



ALBANY BRN

PRODUCT CODE: 7048



EN ISO 20345:2011 | **S3 SRC HRO**

| **SIZES AVAILABLE 6 - 12** |

- GENUINE BLACK NUBUCK LEATHER
- WATER RESISTANT
- 200 JOULE TOE CAP
- REINFORCED KEVLAR MIDSOLE
- RESISTANT TO ACIDS & CHEMICALS
- SLIP RESISTANT SRC OUTSOLE
- HEAT RESISTANT RUBBER SOLE 300°C
- NITRILE RUBBER OUTSOLE
- ANTI-FATIGUE PU FOOTBED



ALBANY TAN

PRODUCT CODE: 7046



EN ISO 20345:2011 | **S3 SRC HRO**

| **SIZES AVAILABLE 6 - 12** |

- PREMIUM FULL GRAIN TAN LEATHER
- WATER RESISTANT
- 200 JOULE TOE CAP
- REINFORCED KEVLAR MIDSOLE
- RESISTANT TO ACIDS & CHEMICALS
- SLIP RESISTANT SRC OUTSOLE
- HEAT RESISTANT RUBBER SOLE 300°C
- NITRILE RUBBER OUTSOLE
- ANTI-FATIGUE PU FOOTBED



AGRICULTURAL SAFETY

CREWE BLK

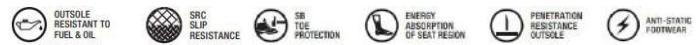
PRODUCT CODE: 7705



EN ISO 20345:2011 | **S3 SRC HRO**

| SIZES AVAILABLE 6 - 12 |

- WAXY CRAZY HORSE BLACK LEATHER
- 2.2mm WATER RESISTANT UPPER
- 200 JOULE TOE CAP
- REINFORCED KEVLAR MIDSOLE
- RESISTANT TO ACIDS & CHEMICALS
- SLIP RESISTANT SRC OUTSOLE
- HEAT RESISTANT RUBBER SOLE 300°C
- NITRILE RUBBER OUTSOLE
- ANTI-FATIGUE PU FOOTBED



CREWE BRN

PRODUCT CODE: 7704



EN ISO 20345:2011 | **S3 SRC HRO**

| SIZES AVAILABLE 6 - 12 |

- WAXY CRAZY HORSE BROWN LEATHER
- 2.2mm WATER RESISTANT UPPER
- 200 JOULE TOE CAP
- REINFORCED KEVLAR MIDSOLE
- RESISTANT TO ACIDS & CHEMICALS
- SLIP RESISTANT SRC OUTSOLE
- HEAT RESISTANT RUBBER SOLE 300°C
- NITRILE RUBBER OUTSOLE
- ANTI-FATIGUE PU FOOTBED



ALBANY RB

PRODUCT CODE: 7048-RB



EN ISO 20345:2011 | **S3 SRC HRO**

| SIZES AVAILABLE 6 - 12 |

- GENUINE NUBUCK RUSTIC BROWN
- WATER RESISTANT
- 200 JOULE TOE CAP
- REINFORCED KEVLAR MIDSOLE
- RESISTANT TO ACIDS & CHEMICALS
- SLIP RESISTANT SRC OUTSOLE
- HEAT RESISTANT RUBBER SOLE 300°C
- NITRILE RUBBER OUTSOLE
- ANTI-FATIGUE PU FOOTBED



AGRICULTURAL SAFETY

BURNLEY

PRODUCT CODE: 7051



EN ISO 20345:2011

S3 SRC HRO

| SIZES AVAILABLE 6 - 12 |

- TOBACCO BROWN FULL GRAIN LEATHER
- 2.2mm WATER RESISTANT UPPER
- 200 JOULE TOE CAP
- REINFORCED KEVLAR MIDSOLE
- RESISTANT TO ACIDS & CHEMICALS
- SLIP RESISTANT SRC OUTSOLE
- HEAT RESISTANT RUBBER SOLE 300°C
- NITRILE RUBBER OUTSOLE
- TPU REAR KICK GUARD
- SIDE PULL LOOPS
- ANTI-FATIGUE PU FOOTBED



LUDLOW

PRODUCT CODE: 7025



EN ISO 20345:2011

S3 SRC HRO

| SIZES AVAILABLE 6 - 12 |

- GENUINE TAN FAWN LEATHER
- 2.2mm WATER RESISTANT UPPER
- 200 JOULE TOE CAP
- REINFORCED KEVLAR MIDSOLE
- RESISTANT TO ACIDS & CHEMICALS
- SLIP RESISTANT SRC OUTSOLE
- HEAT RESISTANT RUBBER SOLE 300°C
- NITRILE RUBBER OUTSOLE
- TPU REAR KICK GUARD
- SIDE PULL LOOPS
- ANTI-FATIGUE PU FOOTBED



MEDICAL/CATERING SAFETY

SOMA BLK

PRODUCT CODE: 9213



EN ISO 20345:2011

S2 SRC

| SIZES AVAILABLE 2 - 12 |

- VEGAN MICROFIBRE
- ANTI-BACTERIAL INNER LINING
- 200 JOULE TOE CAP
- SYNTHETIC ABSORBANT COLLAR
- RESISTANT TO ACIDS & CHEMICALS
- SLIP RESISTANT SRC OUTSOLE
- LIGHTWEIGHT & BREATHABLE
- DUAL DENSITY PU
- REMOVABLE ANTI-ODOUR FOOTBED



SOMA WHT

PRODUCT CODE: 9211



EN ISO 20345:2011

S2 SRC

| SIZES AVAILABLE 2 - 12 |

- VEGAN MICROFIBRE
- ANTI-BACTERIAL INNER LINING
- 200 JOULE TOE CAP
- SYNTHETIC ABSORBANT COLLAR
- RESISTANT TO ACIDS & CHEMICALS
- SLIP RESISTANT SRC OUTSOLE
- LIGHTWEIGHT & BREATHABLE
- DUAL DENSITY PU
- REMOVABLE ANTI-ODOUR FOOTBED



GLIDE BLK

PRODUCT CODE: 9313



EN ISO 20345:2011

S2 SRC

| SIZES AVAILABLE 2 - 12 |

- VEGAN MICROFIBRE
- ANTI-BACTERIAL INNER LINING
- 200 JOULE TOE CAP
- SLIP ON DESIGN
- RESISTANT TO ACIDS & CHEMICALS
- SLIP RESISTANT SRC OUTSOLE
- LIGHTWEIGHT & BREATHABLE
- DUAL DENSITY PU
- REMOVABLE ANTI-ODOUR FOOTBED



MEDICAL/CATERING SAFETY

GLIDE WHT

PRODUCT CODE: 9312



EN ISO 20345:2011

S2 SRC

| SIZES AVAILABLE 2 - 12 |

- VEGAN MICROFIBRE
- ANTI-BACTERIAL INNER LINING
- 200 JOULE TOE CAP
- SLIP ON DESIGN
- RESISTANT TO ACIDS & CHEMICALS
- SLIP RESISTANT SRC OUTSOLE
- LIGHTWEIGHT & BREATHABLE
- DUAL DENSITY PU
- REMOVABLE ANTI-ODOUR FOOTBED



CLOG WHT

PRODUCT CODE: 9401



EN ISO 20345:2011

O2 SRC

| SIZES AVAILABLE 2 - 12 |

- VEGAN MICROFIBRE
- ANTI-BACTERIAL INNER LINING
- MOISTURE ABSORBANT INSOLE
- EASY SLIP ON CLOG DESIGN
- RESISTANT TO ACIDS & CHEMICALS
- SLIP RESISTANT SRC OUTSOLE
- LIGHTWEIGHT & BREATHABLE
- DUAL DENSITY PU
- REMOVABLE ANTI-ODOUR FOOTBED



CLOG BLK

PRODUCT CODE: 9403



EN ISO 20345:2011

O2 SRC

| SIZES AVAILABLE 2 - 12 |

- VEGAN MICROFIBRE
- ANTI-BACTERIAL INNER LINING
- MOISTURE ABSORBANT INSOLE
- EASY SLIP ON CLOG DESIGN
- RESISTANT TO ACIDS & CHEMICALS
- SLIP RESISTANT SRC OUTSOLE
- LIGHTWEIGHT & BREATHABLE
- DUAL DENSITY PU
- REMOVABLE ANTI-ODOUR FOOTBED



ACCESSORIES

FOOTBEDS

PRODUCT CODE: 4903



SOLD IN PACKS OF 5

| **SIZES AVAILABLE 3 - 12** |

- EVA FOAM
- BREATHABLE AND MOISTURE ABSORBING
- IMPACT ABSORBING HEEL FOAM
- REMOVABLE DESIGN
- ANTI-ODOUR
- CONTOURED GROVES FOR MOISTURE RELEASE
- FITS ANY FOOTWEAR

GEL INSOLE

PRODUCT CODE: 4910



SOLD INDIVIDUALLY BOXED

| **SIZES AVAILABLE 6 - 12** |

- IMPACT ABSORBING GEL
- TPU STRIDE STABILIZING ARCH SUPPORT
- MOISTURE ABSORBANT TOP LAYER
- MILITARY GRADE MEMORY FOAM
- IDEAL FOR PLANTAR FASCITIS
- GEL TO HELP WITH HEEL PAIN
- HELPS WITH MUSCULAR FATIGUE
- REMOVABLE
- ANTI-ODOUR

LACES

PRODUCT CODE: LACES



SOLD IN PACKS OF 10

- AVAILABLE IN 120cm and 150cm
- SOLID BLACK COLOUR or BLACK/GREY
- PLASTIC TIPS FOR EASY INSERT
- NON-TANGLE
- DURABLE AND TEAR RESISTANT
- INDIVIDUALLY PACKED & SEALED
- BLACK COLOUR
- TUFFKING BRAND

ORDER NOW

CUSTOM & BESPOKE FITTING

TENDER SUPPORT

WEARER TRIAL ASSISTANCE

NEXT DAY DELIVERY



ON-SITE PRODUCT EDUCATION

NO MINIMUM ORDERS

DROPSHIP TO CUSTOMERS

DEDICATED SALES MANAGER

0208 418 3562 | SALES@GIFFARDNEWTON.COM



TUFFKING



0208 418 3562
SALES@GIFFARDNEWTON.COM
38 CHIGWELL LANE
IG10 3NY
LOUGHTON, ESSEX

G | N

Giffard Newton & Sons Limited
Est. 1854



WWW.GIFFARDNEWTON.COM

VAT NO. GB760857211
REGISTERED IN ENGLAND & WALES NUMBER 3905983